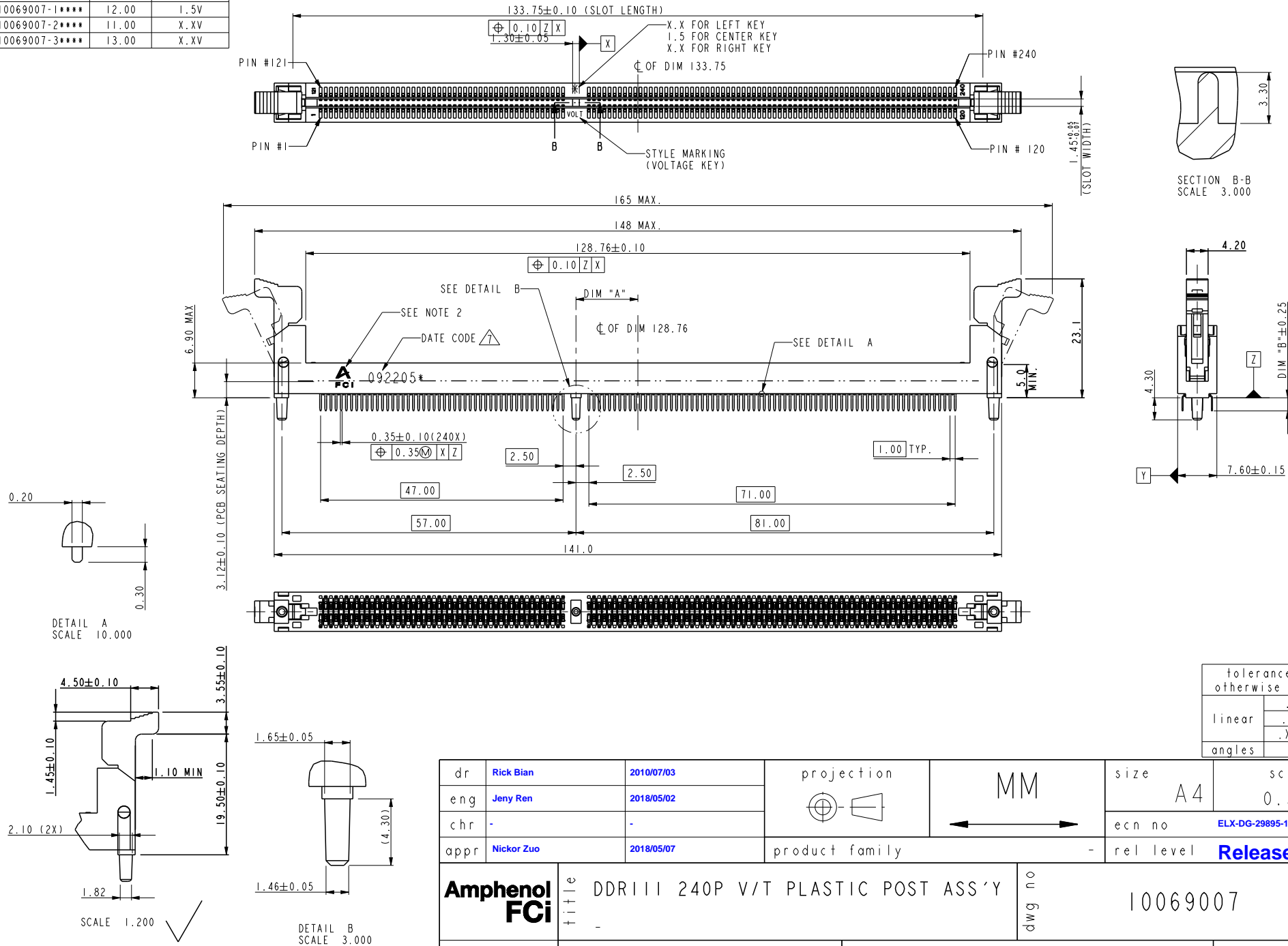


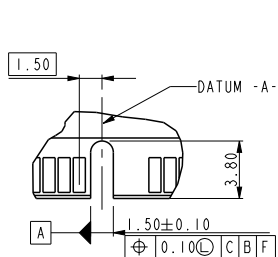
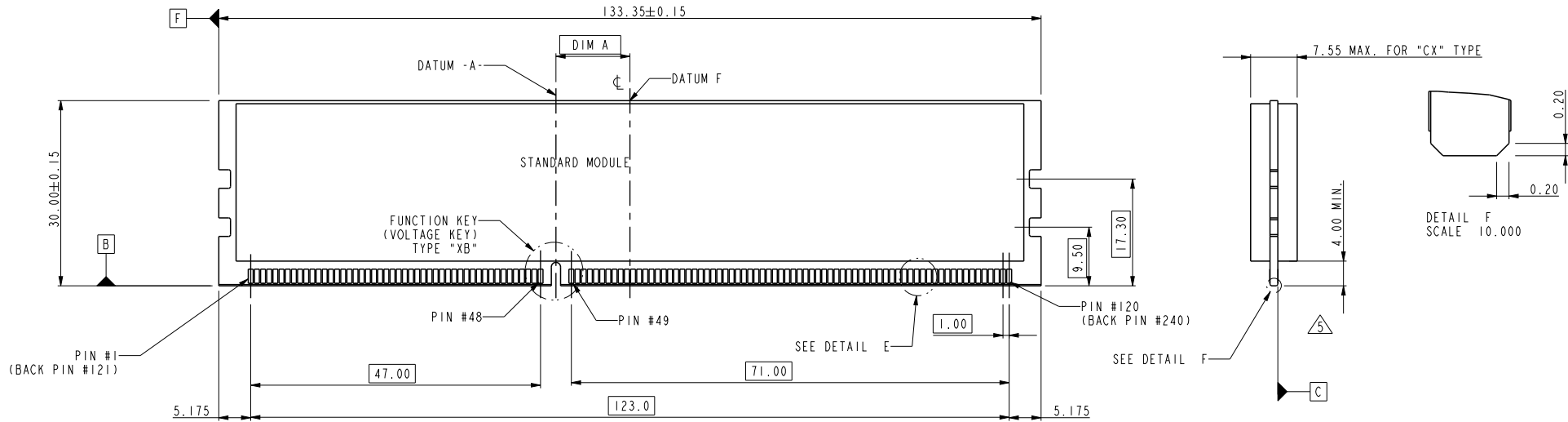


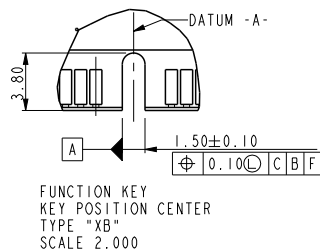
PART NO.	DIM "A"	DESCRIPTION
10069007-1****	12.00	1.5V
10069007-2****	11.00	X.XV
10069007-3****	13.00	X.XV



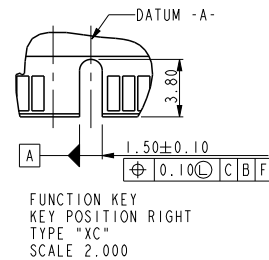
dr	Rick Bian	2010/07/03	<div>projection</div> <div></div>	<div>MM</div> <div></div>	size	A4	scale	0.500							
eng	Jeny Ren	2018/05/02			ecn no		ELX-DG-29895-1								
chr	-	-													
appr	Nickor Zuo	2018/05/07			product family		-	rel level		Released					
Amphenol FCI		title			DDRIII 240P V/T PLASTIC POST ASS'Y			dwg no		10069007		rev		K	
		cat. no.			-			Product - Customer Drw			sheet 1 of 4				



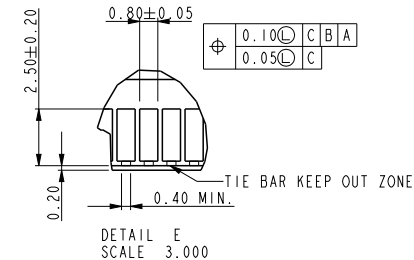
FUNCTION KEY
KEY POSITION LEFT
TYPE "XA"
SCALE 2.000



FUNCTION KEY
KEY POSITION CENTER
TYPE "XB"
SCALE 2.000



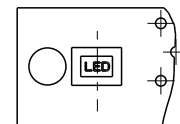
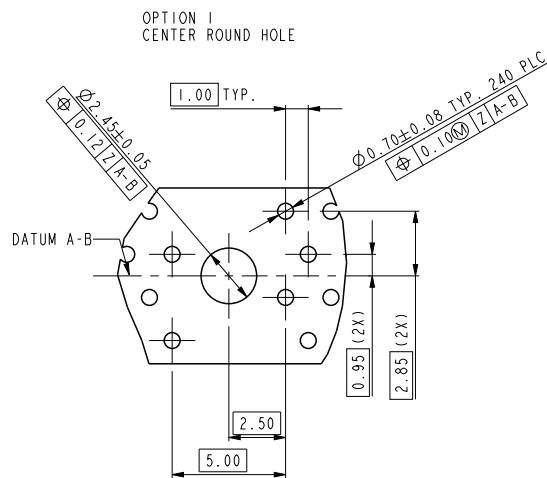
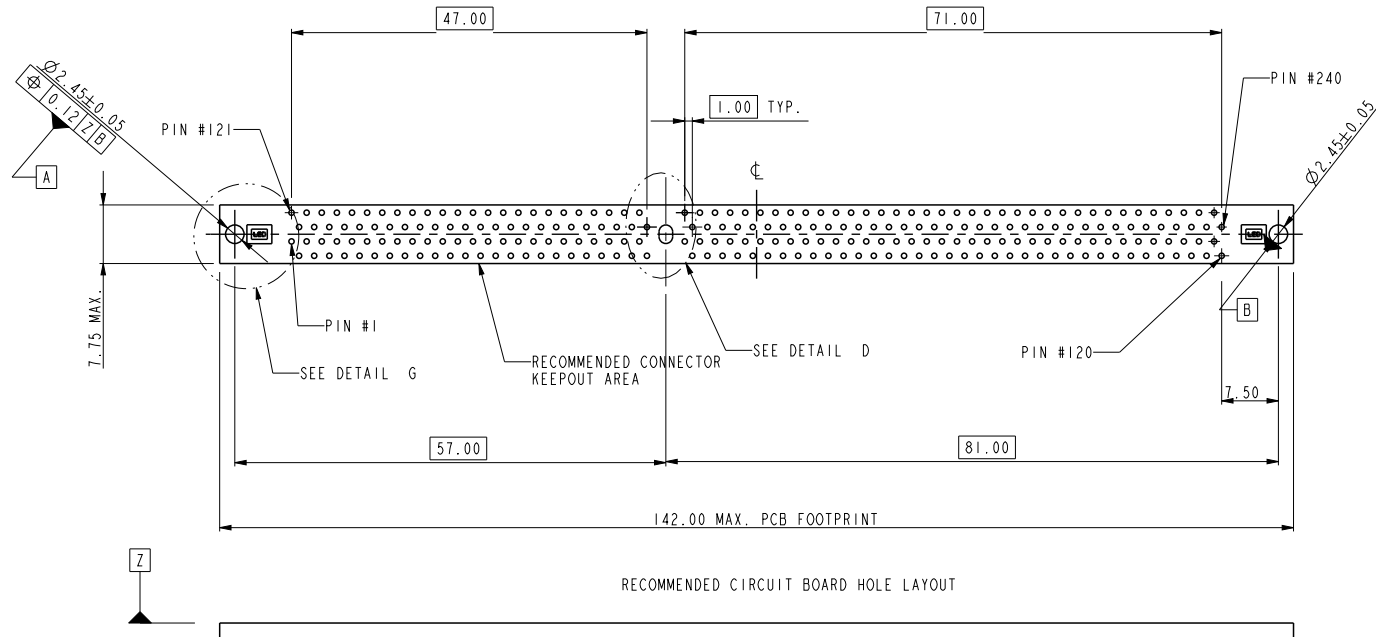
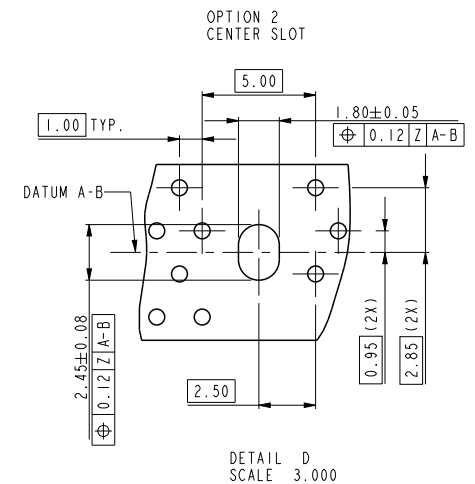
FUNCTION KEY
KEY POSITION RIGHT
TYPE "XC"
SCALE 2.000



tolerance unless otherwise specified	
linear	.X ± .38 .XX ± .25 .XXX ± .13
angles	0° ± 2°

TYPE "XA"	X.X VOLTAGE
TYPE "XC"	X.X VOLTAGE
TYPE "XB"	1.5 VOLTAGE
SUB KEY POS #1	DESCRIPTION

dr	Rick Bian	2010/07/03	projection	MM	size	A4	scale	0.500
eng	Jeny Ren	2018/05/02			ecn no	ELX-DG-29895-1		
chr	-	-			rel level	Released		
appr	Nickor Zuo	2018/05/07	product family					
Amphenol FCI		title			dwg no		rev	
		DDR III 240P V/T PLASTIC POST ASS'Y			10069007		K	
		cat. no.		*	Product - Customer Drw			sheet 2 of 4

DETAIL G
SCALE 2.000

dr	Rick Bian	2010/07/03	<div>projection</div> <div></div>	<div>MM</div> <div></div>	size	A4	scale	0.500					
eng	Jeny Ren	2018/05/02			ecn no	ELX-DG-29895-1							
chr	-	-			rel level	Released							
appr	Nickor Zuo	2018/05/07	product family										
Amphenol FCI			title			DDRIII 240P V/T PLASTIC POST ASS'Y		dwg no		10069007	rev	K	
			cat. no.			*	Product - Customer Drw			sheet 3 of 4			

A

B

C

D

A

B

C

D

10069007 - □ □ □ □ □

PLATING

CODE	CONTACT	SOLDERTAIL	UNDERPLATE
2	15u" (0.38um) MIN. GOLD	100u" (2.54um) MIN. TIN/LEAD	50u" (1.27um) MIN. NICKEL OVERALL
3	30u" (0.76um) MIN. GOLD		
4	3u" (0.07um) MIN. GOLD	100u" (2.54um) MIN. 100% TIN	50u" (1.27um) MIN. NICKEL OVERALL
7LF	15u" (0.38um) MIN. GOLD		
8LF	30u" (0.76um) MIN. GOLD		
9LF	3u" (0.07um) MIN. GOLD		

STYLE : MECHANICAL KEYING

1 : 1.5 VOLT. W/ CENTER KEY "XB"
2 : X.X VOLT. W/ LEFT KEY "XA"
3 : X.X VOLT. W/ RIGHT KEY "XC"

PLASTIC PEG LENGTH

1 : DIM "D" = 4.30

TAIL LENGTH

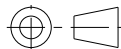

CODE	DIM "B"
1	2.67
2	3.18

COLOR OF HOUSING AND EJECTOR

0 : BLACK HOUSING + IVORY EJECTOR
1 : BLUE HOUSING + IVORY EJECTOR
2 : BLACK HOUSING + BLACK EJECTOR
3 : BLACK HOUSING + CLEAR EJECTOR
4 : BLUE HOUSING + CLEAR EJECTOR
5 : IVORY HOUSING + CLEAR EJECTOR
6 : BLACK HOUSING + BLUE EJECTOR
7 : IVORY HOUSING + IVORY EJECTOR
9 : IVORY HOUSING + BLACK EJECTOR

NOTES:

- MATERIAL:
HOUSING: HIGH PERFORMANCE RESINS, GLASS FILLED UL94V-0 RATED.
EJECTOR: HIGH PERFORMANCE RESINS, GLASS FILLED UL94V-0 RATED.
TERMINAL: COPPER ALLOY.
METAL CLIP: COPPER ALLOY.
- FCI LOGO TO BE APPROXIMATELY LOCATED AS SHOWN ON PRINT.
- PRODUCT SPECIFICATION: GS-12-368.
- PACKAGING SPECIFICATION: GS-14-899.
- CARD THICKNESS APPLIES ACROSS TABS AND INCLUDES PLATING AND/OR METALIZATION.
- LEADING EDGE OF CONTACT PADS SPECIFIED BY THE KEEP OUT ZONE SHALL BE FREE OF BURRS AND EXTERNAL TIE BARS.
FOR OPTIMUM PERFORMANCE. THE TIE BAR IS TO BE ON AN INTERNAL LAYER SO THAT THE REMNANT CANNOT CAUSE CONTACT DAMAGE.
- THE DATE CODE IS SHOWN "MMDDYY*"."*" MEANS PRODUCTION LINE CODE.
- SOCKET IS COMPLIANT TO JEDEC SO-007 AND ACCEPTS JEDEC MODULE MO-269, VARIATIONS AA THRU FC.
- THIS PRODUCT MEETS EUROPEAN UNION DIRECTIVES AND OTHER COUNTRY REGULATIONS AS DESCRIBED IN GS-22-008.
- THE HOUSING WILL WITHSTAND EXPOSURE TO 260°C PEAK TEMPERATURE FOR 10 SECONDS IN A WAVE SOLDER APPLICATION.
- THE CLEAR LATCH CAN WITHSTAND MAX 174°C EXPOSURE TEMPERATURE.

dr	Rick Bian	2010/07/03	<div>projection</div> <div></div>	<div>MM</div> <div></div>	size	A4	scale	0.500						
eng	Jeny Ren	2018/05/02			ecn no				ELX-DG-29895-1					
chr	-	-			rel level				Released					
appr	Nickor Zuo	2018/05/07	product family											
<div>Amphenol FCI</div>			<div>title</div> <div>DDR111 240P V/T PLASTIC POST ASS'Y</div> <div>-</div>			<div>dwg no</div> <div>10069007</div>			<div>rev</div> <div>K</div>					
			cat. no.			*			Product - Customer Drw			sheet 4 of 4		